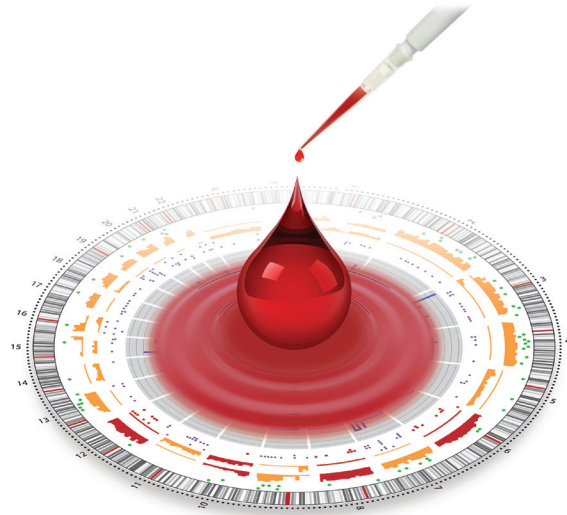




# RNA-Seq of Blood

## ScriptSeq<sup>™</sup> Complete Gold (Blood)

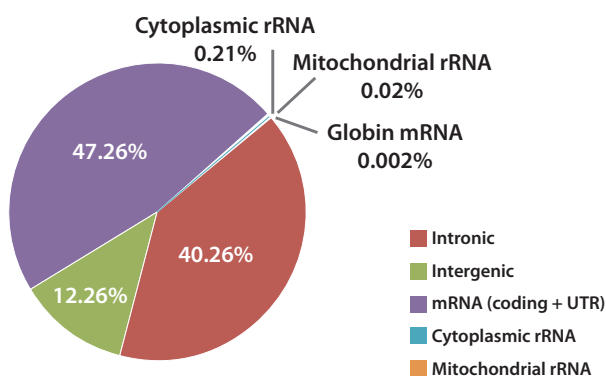
- ▶ Removes globin mRNA and ribosomal RNA
- ▶ Creates an Illumina<sup>®</sup> sequencing library
- ▶ The data contains high amounts of coding and non-coding information
  
- ▶ Find more genes
- ▶ Find more coding and non-coding RNA's
- ▶ Good for small samples
- ▶ All phases of research



Blood is an important sample for research into 6,000 rare diseases and 12,000 disease groups. The data from samples treated with ScriptSeq Complete Gold (Blood) is focused on valuable RNA. Finding new genes, splice variants and isoforms is important to disease and health research.

ScriptSeq Complete (Blood) offers the most informative sequencing results by removing unwanted globin mRNA and ribosomal RNA prior to sequencing.

**Figure 1. RNA-Seq libraries contain coding and non-coding RNA.**



### Find more coding and non-coding RNA

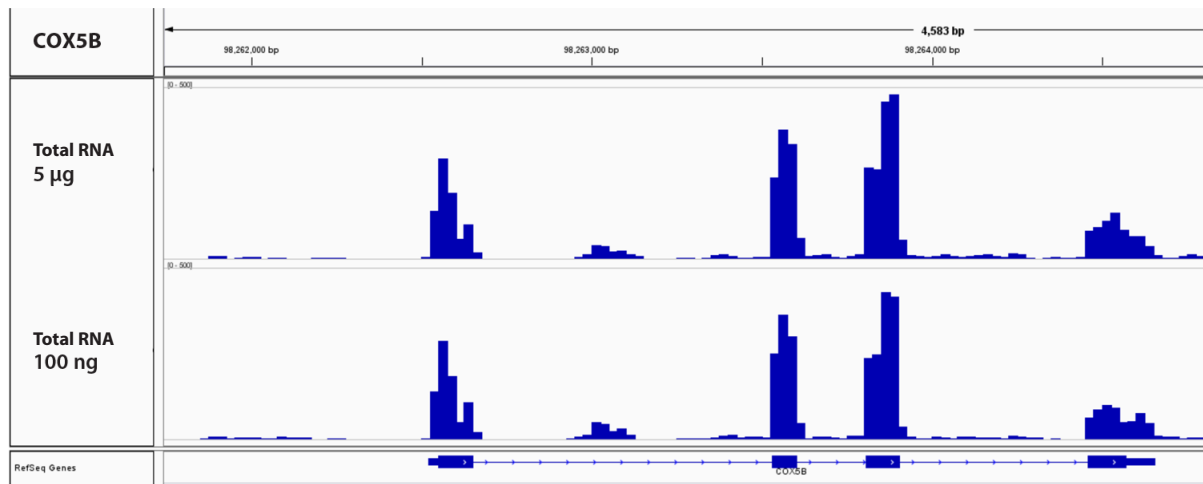
ScriptSeq Complete Gold (Blood) libraries were prepared from 5 µg of RNA isolated from human whole blood and sequenced on an Illumina<sup>®</sup> sequencer. Greater than 98% of all reads contain useful information.

RNA-Seq data is very useful to study disease (or health). Figure 1 shows an example in which 47% of the sequencing reads contain coding RNA and 52% contain non-coding RNA.

### Workflow



Figure 2. Gene coverage from large (5 µg) or small (100 ng) of RNA.



### Available for all sample sizes

ScriptSeq Complete Gold (Blood) is available for 100 ng + of total RNA. Results from small amounts of total RNA are very similar to results from high amounts of total RNA. Figure 2 shows coverage of the COX5B gene when either a small amount (100 ng) of total RNA or large amount (5 µg) of total RNA was treated with ScriptSeq Complete Gold (Blood).

### Strong gene coverage

In figure 2, the height of the blue bars show how many reads align to that sequence. Taller bars show more reads and deeper (better) coverage. Coding (thick blue bars) regions in both the small and large input ranges is similar.

### Success begins with purification

#### MasterPure RNA purification kit

Purification is an important step to prepare your sample. MasterPure safely removes unwanted material to give you pure, intact total RNA.

MasterPure offers unique benefits:

- ▶ Keep RNA intact (does not degrade RNA)
- ▶ Retain RNA diversity (including small RNA)
- ▶ Maximize genes discovered
- ▶ Available for all sample sizes

Cat. #

Quantity

#### MasterPure™ RNA Purification Kit (for isolating RNA only)

MCR85102

100 Purifications

Cat. #

Quantity

#### ScriptSeq™ Complete Gold Kit (Blood)—Low Input

SCL24GBL 24 Reactions

SCL6GBL 6 Reactions

For 100 ng – 1 µg total blood RNA.

#### ScriptSeq™ Complete Gold Kit (Blood)

BGGB1306 6 Reactions

BGGB1324 24 Reactions

For 1 µg – 5 µg total blood RNA.

#### FailSafe™ PCR Enzyme Mix

FSE51100 100 Units

Patents: [www.illumina.com/patents](http://www.illumina.com/patents)